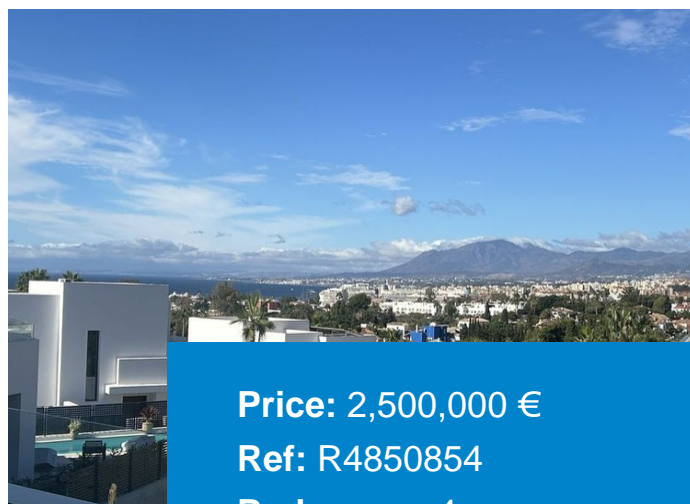


+ 34 951 69 00 74 + 36 620 249 227

INFO@BAHIAESTATES.COM



DETACHED VILLA FOR SALE IN RÍO REAL

Price: 2,500,000 €

Ref: R4850854

Bedrooms: 4

Bathrooms: 4

Built size: 200 m²

Plot/Garden: 650 m²

Terrace: 136 m²

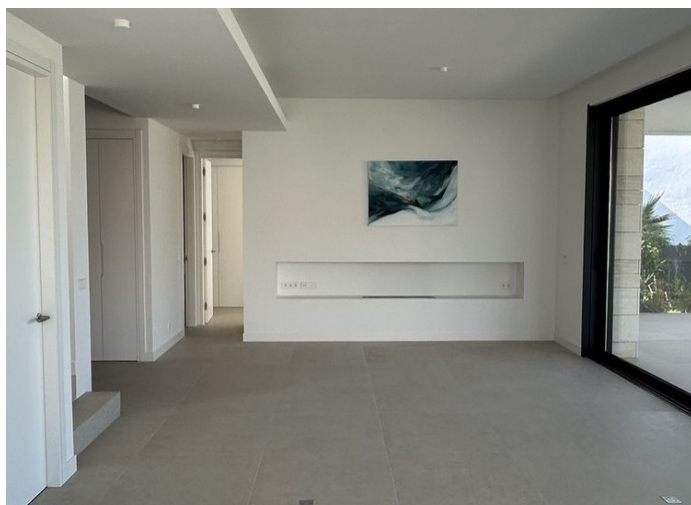
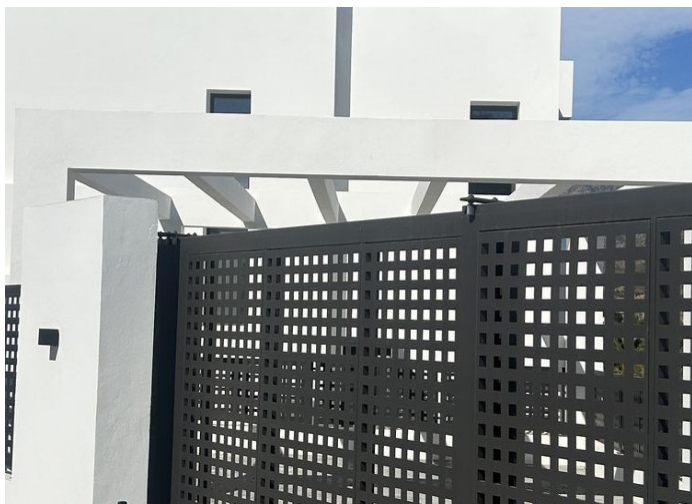
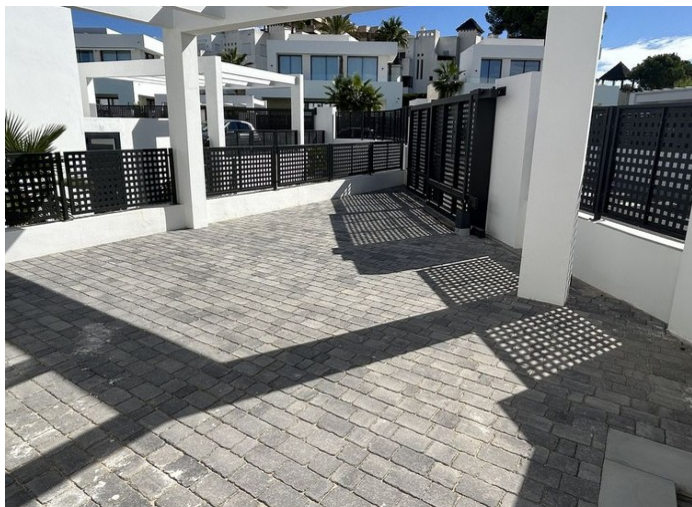
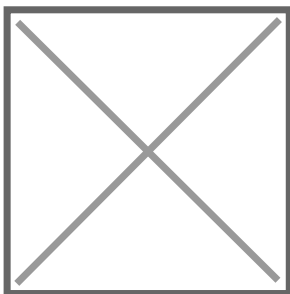
La Finca de Marbella 2 is a natural continuation of the phenomenal success of the La Finca de Marbella project. The new project includes 36 modern luxury villas, each on a separate plot with its own swimming pool. The villas are located on south-western slopes with beautiful sea and mountain views. Most plots offer views of Marbella, the Mediterranean Sea, La Concha mountain, and the famous Puerto Banús.

Precio no incluye gastos ni tributos. Gastos adicionales por parte del comprador: Impuesto Sobre Transmisiones (8% hasta 400.000€, 9% de 400.000 a 700.000€ y 10% a partir de 700.000€), Actos Jurídicos Documentados 1,5% sobre el precio de compra, gastos de registro y notaría. Ficha informativa a su disposición en nuestra oficina según Decreto 218/2005 de 11/Oct.

Sale price does not include costs or taxes. Additional costs for the buyer: inscription and notary fees, ITP (8% up to 400.000 euros, 9% from 400.000 to 700.000 euros and 10% from 700.000 euros) or, alternatively 10% VAT and AJD (1.5% on the purchase price) on new properties and subject to some requisites to be met. This info is subject to errors, omissions, modifications, prior sale or withdrawal from the market. Information sheet available, Decree 218/2005 Oct. 11th

+ 34 951 69 00 74 + 36 620 249 227

INFO@BAHIAESTATES.COM



Precio no incluye gastos ni tributos. Gastos adicionales por parte del comprador: Impuesto Sobre Transmisiones (8% hasta 400.000€, 9% de 400.000 a 700.000€ y 10% a partir de 700.000€), Actos Jurídicos Documentados 1,5% sobre el precio de compra, gastos de registro y notaría. Ficha informativa a su disposición en nuestra oficina según Decreto 218/2005 de 11/Oct.

Sale price does not include costs or taxes. Additional costs for the buyer: inscription and notary fees, ITP (8% up to 400.000 euros, 9% from 400.000 to 700.000 euros and 10% from 700.000 euros) or, alternatively 10% VAT and AJD (1.5% on the purchase price) on new properties and subject to some requites to be met. This info is subject to errors, omissions, modifications, prior sale or withdrawal from the marke. Information sheet available, Decree 218/2005 Oct. 11th