



## TOWNHOUSE FOR SALE IN LA CALA DE MIJAS

**Price:** 875,000 €  
**Ref:** R5306884  
**Bedrooms:** 3  
**Bathrooms:** 2.5  
**Built size:** 120 m<sup>2</sup>  
**Plot/Garden:** 20 m<sup>2</sup>  
**Terrace:** 15 m<sup>2</sup>

Fantastic townhouse in a beautiful complex by the sea!

This is a stunning townhouse in the Mijas Playa Club, one of the most beautiful complexes in La Cala de Mijas.

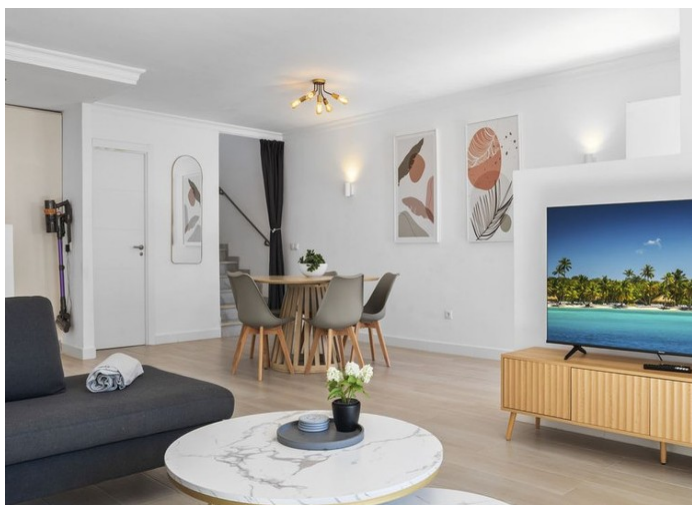
Upon entering, you come into a very spacious living room with a dining area and a large open kitchen equipped with all necessary appliances. At the front of the house, there is a terrace with a small garden. This garden adjoins the swimming pool. At the back of the house, there is a patio.

There is also a separate toilet on the ground floor.

---

Precio no incluye gastos ni tributos. Gastos adicionales por parte del comprador: Impuesto Sobre Transmisiones (8% hasta 400.000€, 9% de 400.000 a 700.000€ y 10% a partir de 700.000€), Actos Jurídicos Documentados 1,5% sobre el precio de compra, gastos de registro y notaría. Ficha informativa a su disposición en nuestra oficina según Decreto 218/2005 de 11/Oct.

Sale price does not include costs or taxes. Additional costs for the buyer: inscription and notary fees, ITP (8% up to 400.000 euros, 9% from 400.000 to 700.000 euros and 10% from 700.000 euros) or, alternatively 10% VAT and AJD (1.5% on the purchase price) on new properties and subject to some requisites to be met. This info is subject to errors, omissions, modifications, prior sale or withdrawal from the market. Information sheet available, Decree 218/2005 Oct. 11th



Precio no incluye gastos ni tributos. Gastos adicionales por parte del comprador: Impuesto Sobre Transmisiones (8% hasta 400.000€, 9% de 400.000 a 700.000€ y 10% a partir de 700.000€), Actos Jurídicos Documentados 1,5% sobre el precio de compra, gastos de registro y notaría. Ficha informativa a su disposición en nuestra oficina según Decreto 218/2005 de 11/Oct.

Sale price does not include costs or taxes. Additional costs for the buyer: inscription and notary fees, ITP (8% up to 400.000 euros, 9% from 400.000 to 700.000 euros and 10% from 700.000 euros) or, alternatively 10% VAT and AJD (1.5% on the purchase price) on new properties and subject to some requites to be met. This info is subject to errors, omissions, modifications, prior sale or withdrawal from the marke. Information sheet available, Decree 218/2005 Oct. 11th