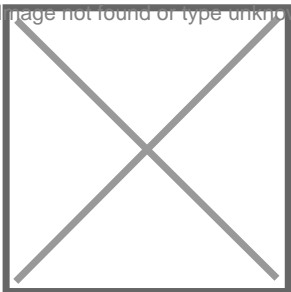
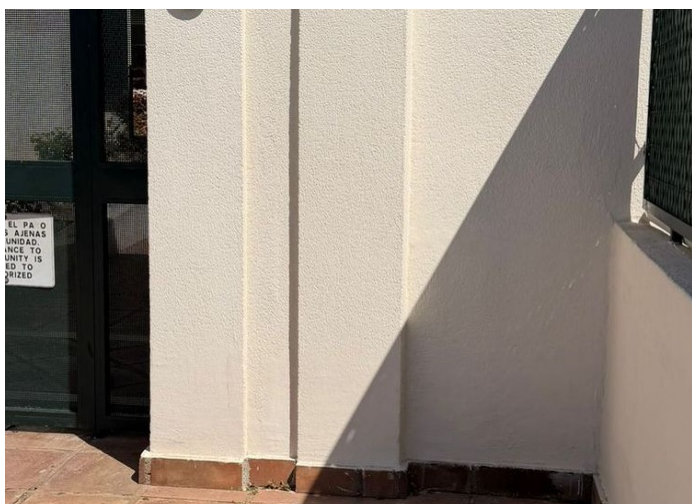


Image not found or type unknown



+ 34 951 69 00 74 + 36 620 249 227

INFO@BAHIAESTATES.COM



PENTHOUSE FOR SALE IN PUERTO BANÚS

Price: 499,000 €

Ref: R5346646

Bedrooms: 2

Bathrooms: 2

Built size: 97 m²

Plot/Garden: 0 m²

Terrace: 54 m²

?

2-Bedroom Apartment for Sale in Locrimar, Nueva Andalucía

see video tour link below

Fantastic opportunity to purchase a 2-bedroom, 2-bathroom apartment with large terrace in the popular Locrimar development, ideally located in Nueva Andalucía, just minutes from Puerto Banús and the beach.

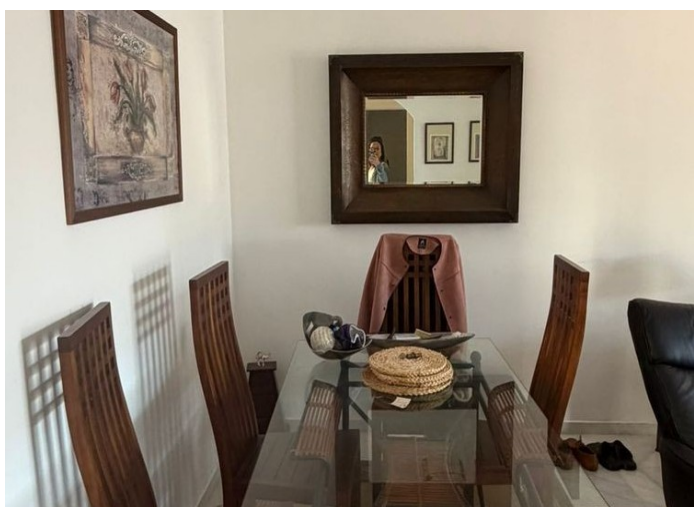
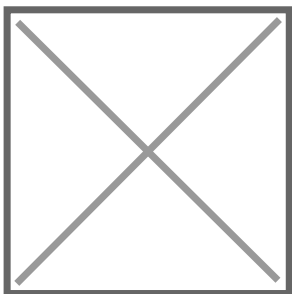
Tourist licences allowed, this property will need refurbishment

? Property Highlights:

- 2 spacious bedrooms and 2 bathrooms
- Bright living/dining area with access to a private terrace

Precio no incluye gastos ni tributos. Gastos adicionales por parte del comprador: Impuesto Sobre Transmisiones (8% hasta 400.000€, 9% de 400.000 a 700.000€ y 10% a partir de 700.000€), Actos Jurídicos Documentados 1,5% sobre el precio de compra, gastos de registro y notaría. Ficha informativa a su disposición en nuestra oficina según Decreto 218/2005 de 11/Oct.

Sale price does not include costs or taxes. Additional costs for the buyer: inscription and notary fees, ITP (8% up to 400.000 euros, 9% from 400.000 to 700.000 euros and 10% from 700.000 euros) or, alternatively 10% VAT and AJD (1.5% on the purchase price) on new properties and subject to some requires to be met. This info is subject to errors, omissions, modifications, prior sale or withdrawal from the market. Information sheet available, Decree 218/2005 Oct. 11th



Precio no incluye gastos ni tributos. Gastos adicionales por parte del comprador: Impuesto Sobre Transmisiones (8% hasta 400.000€, 9% de 400.000 a 700.000€ y 10% a partir de 700.000€), Actos Jurídicos Documentados 1,5% sobre el precio de compra, gastos de registro y notaría. Ficha informativa a su disposición en nuestra oficina según Decreto 218/2005 de 11/Oct.

Sale price does not include costs or taxes. Additional costs for the buyer: inscription and notary fees, ITP (8% up to 400.000 euros, 9% from 400.000 to 700.000 euros and 10% from 700.000 euros) or, alternatively 10% VAT and AJD (1.5% on the purchase price) on new properties and subject to some requites to be met. This info is subject to errors, omissions, modifications, prior sale or withdrawal from the marke. Information sheet available, Decree 218/2005 Oct. 11th